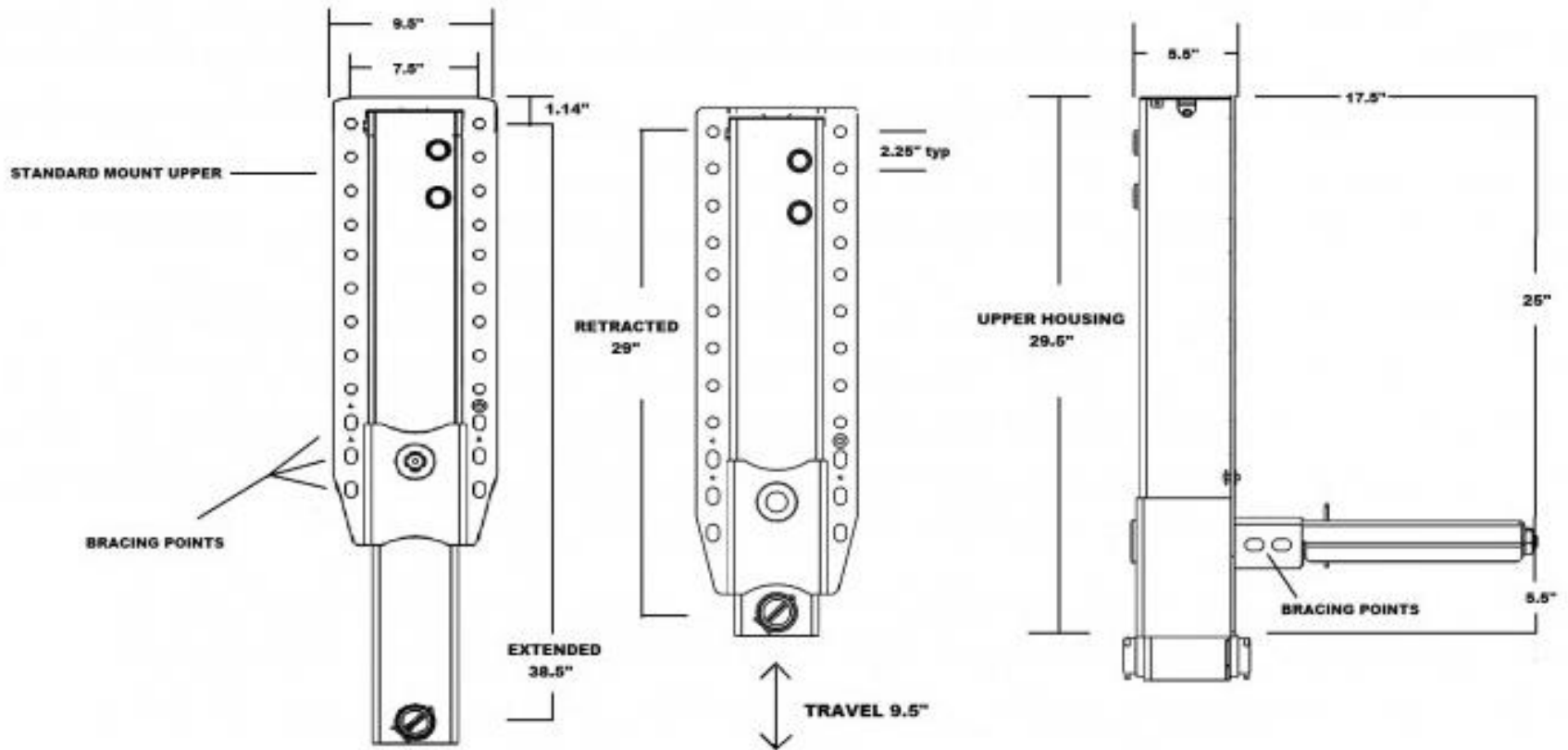


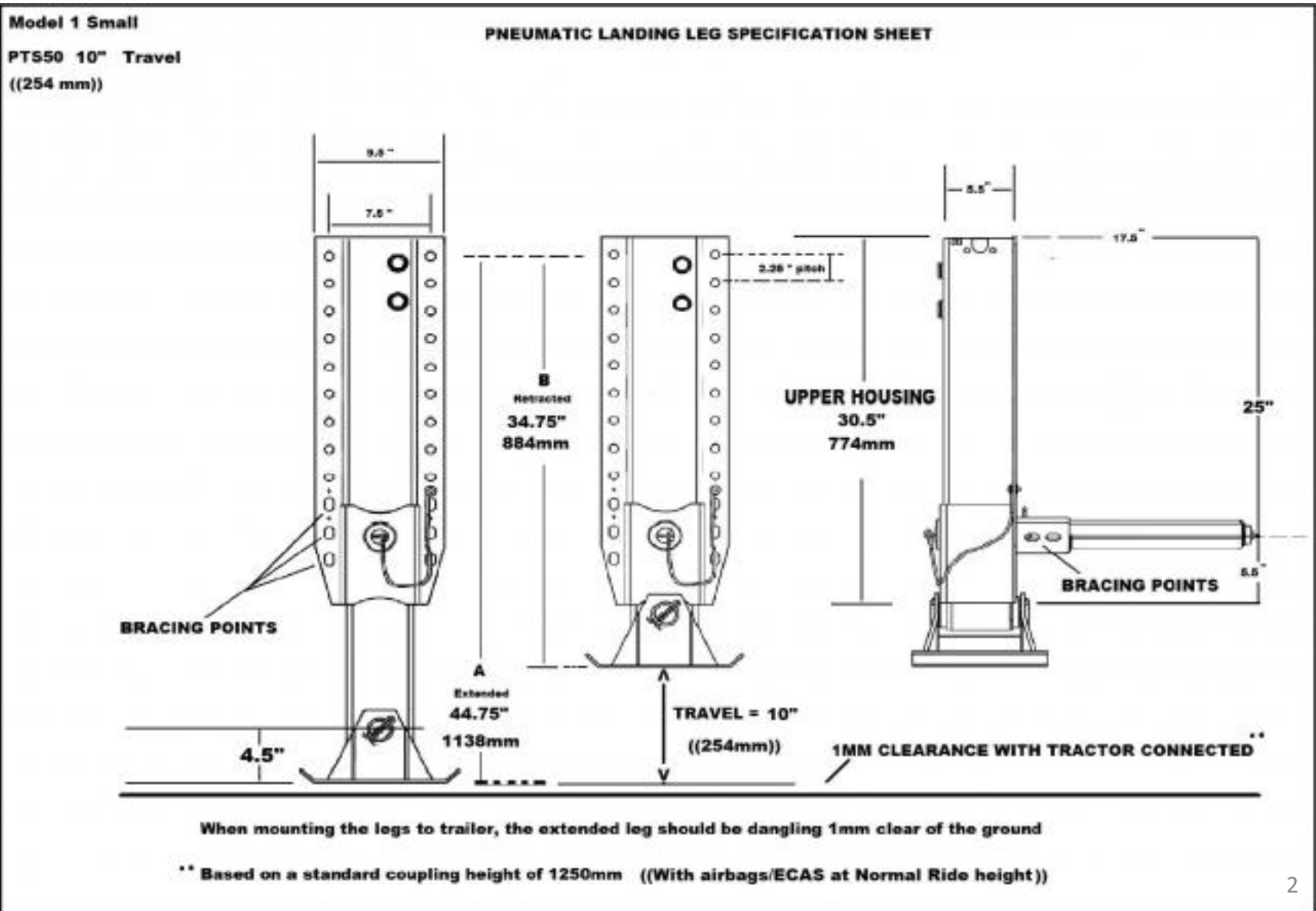


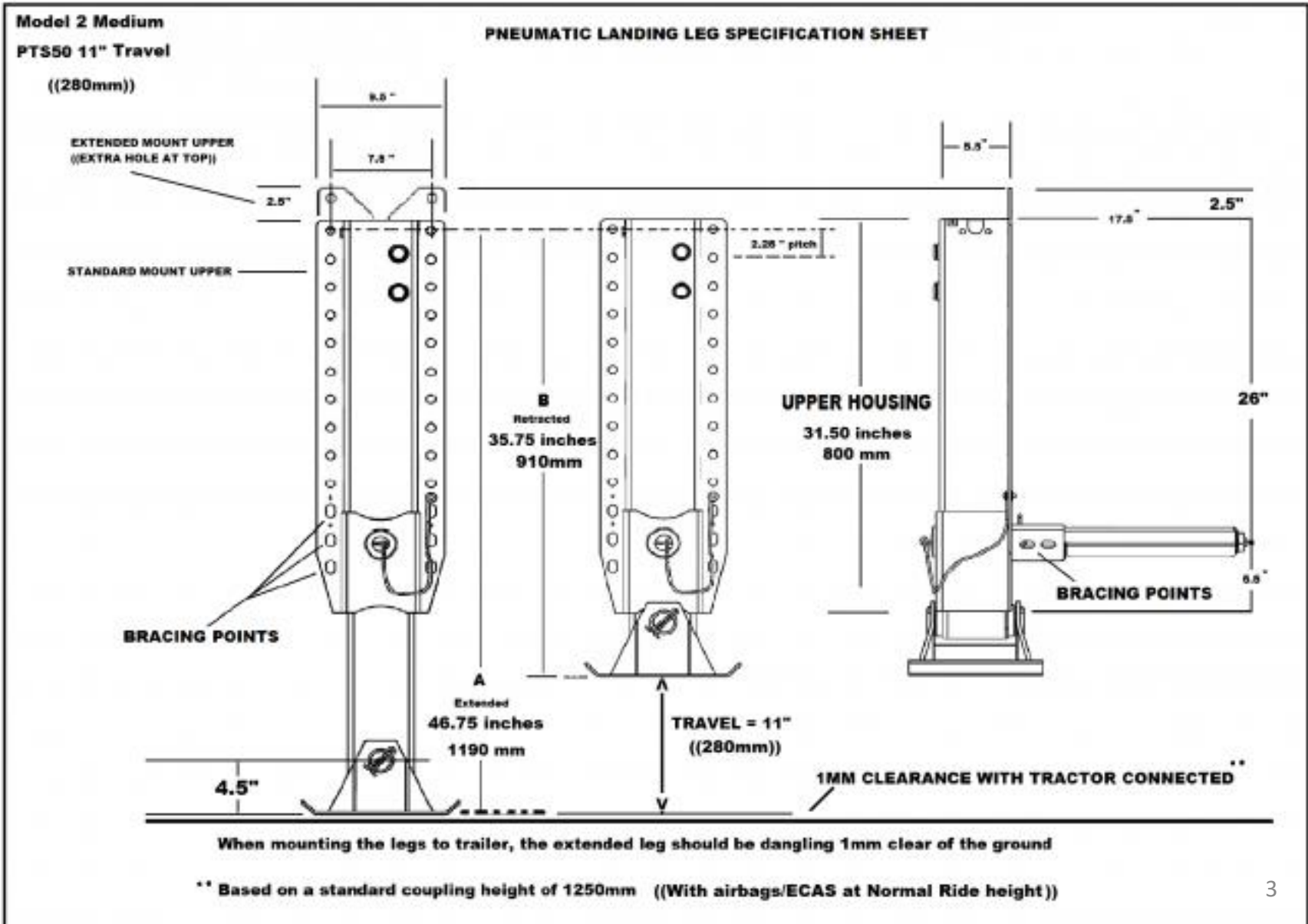
**US Model**  
**PTS50 9.5" Travel**  
**(240 mm)**

### PNEUMATIC LANDING LEG SPECIFICATION SHEET



DEPENDING ON THE REQUIRED SHOE STYLE THE LENGTH OF THE EXTENDED LEG WILL INCREASE BY 1.5" TO 4.5"

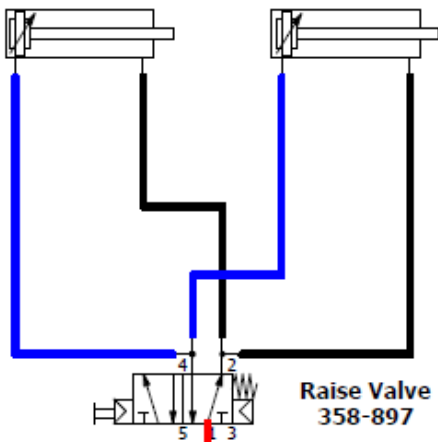






## Raise

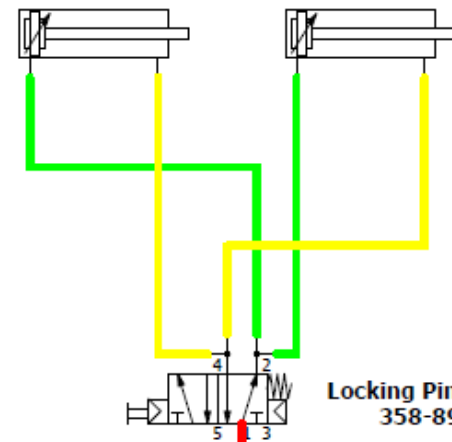
27U2A50A0280S01      27U2A50A0280S01



Raise Valve  
358-897

## Locking Pin

24N2A25A150      24N2A25A150



Locking Pin Valve  
358-895



Main Air Slide Valve

Main Air from Trailer